

MERCURY LOUNGE

217 E. Houston St. NY, NY 10002

Office Phone: 212-375-1200

Phone: 212-260-4700

Venue Specifications

Bar Area - 35' Front Bar

Music Room - 30' wide x 40' deep

Stage - 30' wide x 12' deep x 2'6" high

Production Specifications

PLEASE ADVANCE ANY PRODUCTION NEEDS (i.e. extra input needs, extra monitor mixes, **bringing your own FOH** ...)

Failure to advance may result in a loss of soundcheck

Load-In and Parking

Load-in through Front doors of 217 E Houston (70" x 90")

Please load in at least a half hour before your soundcheck time

No parking provided in front of club (ticketing enforced)

Street parking only

Dressing Room

1 room located in basement for ALL bands throughout the night

Mercury Lounge is not responsible for any possessions left in room.

Private bathroom, and changing mirror in room.

Front of House

- FOH Console: Soundcraft Vi1 - 32 inputs from stage
- Playback and Record:
1x Tascam CD -RW900SL CD recorder
- Main Speakers:
2x D&B Audiotechnik Q10
3x D&B Audiotechnik QSub
- Main Amps:
2x D&B Audiotechnik D12

Monitors

- **Up to 5 way send from FOH desk**
- **Monitors:**
 - 1x D&B QSUB / M6 Wedge**
 - 4x D&B M6 Wedges**
- **Amps:**
 - 3x D&B D6 Amplifiers**

Microphones/DI's

- **Microphones**
 - 1x Shure Beta 52**
 - 2x Shure Beta 56**
 - 1x Shure Beta 58**
 - 7x Shure SM 58**
 - 5x Shure SM 57**
 - 4x Shure Beta 57**
 - 2x Shure SM 81**
 - 1x Audix D6**
 - 1x Audix D4**
 - 1x Audix I5**
 - 1x Electrovoice N/D 308b**
 - 3x Sennheiser e609**
 - 5x Sennheiser e604**
 - 1x AKG D112**
- **Direct Boxes**
 - 2x Radial Pro DI**
 - 2x Radial JDI**
 - 1x Radial Stereo Pro DI**
- **Mic Stands**
 - Full compliment**
- **Mic Lines**
 - 24 Input Stage box**

Backline

Ampeg SVT Classic tube bass amp
Ampeg 8 x 10 bass cabinet
Fender Twin reverb guitar amp
2x Vox AC30 guitar amps
Ludwig classic maple drum kit: 12" Rack Tom, 16" Floor Tom, 22"
Kick Drum
Kick Pedal
Drum Throne
3x Cymbal stands
1x Snare stand
1x Hi-hat stand
(no cymbals or snare drum)
3x Single-tier keyboard stands
3x Double-tier keyboard stands

DJ gear

1x Odyssey FZGS12CDJW Glide Style DJ Coffin Case
2x Technics SL1210 MK2 turntables
2x Pioneer CDJ-900 Nexus Performance Tabletop Digital Multi Players
1x Pioneer DJM-900nexus 4-Channel Professional DJ Mixer

Lighting and Electrical Specifications

- **PLEASE SEE LAST 3 PAGES OF THIS DOCUMENT FOR LIGHTING PLOT AND PATCH INFORMATION.**

****Projector and screen available – we do not have an in house computer or DVD player – please bring your own VGA cable and adapters as well. Backdrop is 9 feet tall and 20 feet wide. Any self supplied backdrops must have a certificate of flame proofing. Please bring your own string / wire to hang.** **Projector is a projectiondesign evo2sx+ Projector****

**All cable, instruments and dimmers have Edison Connectors.
Available Power: 5 – 20A circuits (with Edison quads) located house R.**

Stage

30' wide x 12' deep x 2'6" high

General Information

- Mercury Lounge is a 250 person capacity venue, with a bar in the front room
- 21 and over only – strict policy unless otherwise discussed and approved
- There may be an early or late show before or after your show – details will be advanced, but please be aware that many nights we have two shows
- No fee for merchandise – 100% Artist sells. Well lit merch area available at entrance. A seller can be provided, per advance, for a fee of \$60.
- All video requests must be advanced with the Mercury Lounge at least 24 hours in advance of the show. A release or contract must be signed for any video. There are origination fees for video and audio – please advance
- Band guest lists can either be e-mailed to the venue an hour before doors, or provided on site to the door person.
- There are absolutely no Pyro/ Smoke / Fog / Dry Ice machines allowed. If you are planning on using confetti cannons, there is a \$40 fee for cleanup – please advance.
- Sound checks must be confirmed 1 week prior to show. The Mercury Lounge makes every attempt to reach every band to ensure their sound checks. If we are unable to contact you, please try and contact us - failure to confirm 24 hrs. in adv. will possibly result in the loss of your sound check. CONTACT: Charlie Adler / 212.375.1200 / Charlie@bowerypresents.com
- Bands are responsible for any damage to but not limited to equipment including microphones, stands, monitors, sound boards. Receipts for that night will be withheld from that night's settlement to cover the cost of any damage incurred.
- There is a 105 DB (C weighted) spl limit measured at Front of House
- Any use of a backdrop or screen requires a certificate of fire proofing – no exceptions.
- Wireless internet – Network: MLWIRELESS1, password is culkin80

Please Note: A completed W-9 with US Tax ID or Social Security Number is required to receive full payment. If the artist does not have a US Tax ID or Social Security Number we will withhold 30% of payment as required by law.

Please Note: According to NYC Law Bus / Trailer combos exceeding 55 feet are now deemed illegal, [NYC ordinance 4-15 (b) (4)]. Vehicles over this length will be detained and cited which carries a fine of \$330. No permits are available for reducible vehicles in excess of 55 feet in length. According to NYCDOT, the only legal way for a trailer to go into the city is to be separated from the Motor Coach and “hire” a truck tractor to pull the trailer to venues.

Production Manager:

Alex Beaulieu

alex@mercuryloungenyc.com

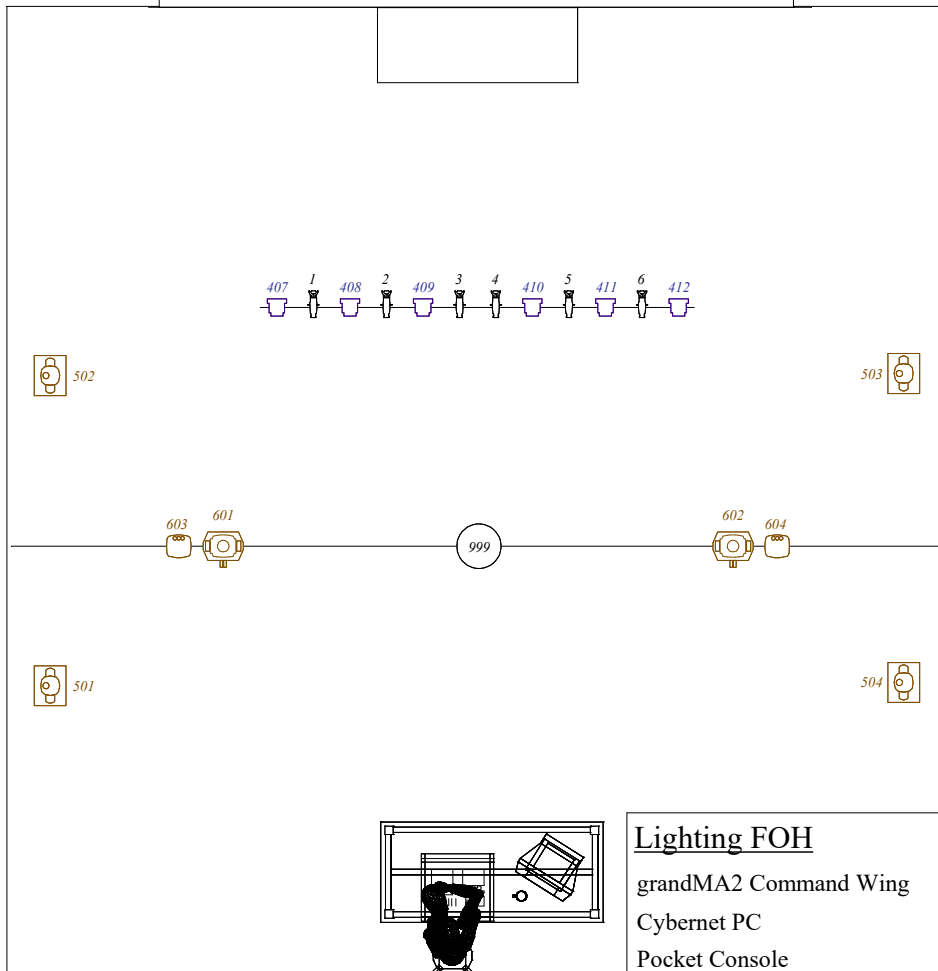
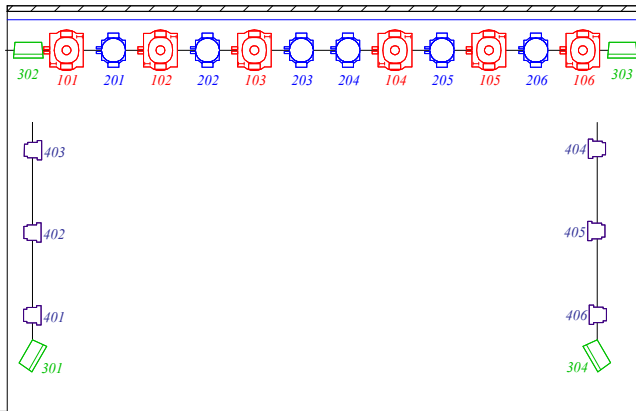
217 E. Houston St. NY, NY 10002

Office: 212-375-1200

Cell: 917-232-6666

The Mercury Lounge Lighting Plot Ver: 09-01-16

Symbol	Name	Count	Fixture Options
	Rogue R1 Spot	6	Channels: 19
	Rogue R2 Wash	6	Channels: 22
	Strike 324	4	Channels: 12
	Intimidator Spot 255	4	Channels: 13
	Source 4 Mini 26deg	6	Channels: 1
	Generico LED Par 188	12	Channels: 8
	SlimBank Tri 18	2	Channels: 9
	Intimidator Spot 100	2	Channels: 11
	Mirror Ball 16 Inch	1	Channels: 1



Patch by Spot				
Venue: Mercury Lounge				
Ver 9/1/16				
Spot	Type	Patch	Position	Fixture Options
1	Source 4 Mini 26deg	1.501	Downstage	N/A
2	Source 4 Mini 26deg	1.502	Downstage	N/A
3	Source 4 Mini 26deg	1.503	Downstage	N/A
4	Source 4 Mini 26deg	1.505	Downstage	N/A
5	Source 4 Mini 26deg	1.506	Downstage	N/A
6	Source 4 Mini 26deg	1.507	Downstage	N/A
101	Rogue R1 Spot	1.1	Upstage	Channels: 19
102	Rogue R1 Spot	1.20	Upstage	Channels: 19
103	Rogue R1 Spot	1.39	Upstage	Channels: 19
104	Rogue R1 Spot	1.58	Upstage	Channels: 19
105	Rogue R1 Spot	1.77	Upstage	Channels: 19
106	Rogue R1 Spot	1.96	Upstage	Channels: 19
201	Rogue R2 Wash	1.115	Upstage	Channels: 22
202	Rogue R2 Wash	1.137	Upstage	Channels: 22
203	Rogue R2 Wash	1.159	Upstage	Channels: 22
204	Rogue R2 Wash	1.181	Upstage	Channels: 22
205	Rogue R2 Wash	1.203	Upstage	Channels: 22
206	Rogue R2 Wash	1.225	Upstage	Channels: 22
301	Strike 324	1.247	Stage Right	Channels: 12
302	Strike 324	1.259	Upstage	Channels: 12
303	Strike 324	1.271	Upstage	Channels: 12
304	Strike 324	1.283	Stage Left	Channels: 12
401	Generico X188	1.295	Stage Right	Channels: 8
402	Generico X188	1.303	Stage Right	Channels: 8
403	Generico X188	1.311	Stage Right	Channels: 8
404	Generico X188	1.319	Stage Left	Channels: 8
405	Generico X188	1.327	Stage Left	Channels: 8
406	Generico X188	1.335	Stage Left	Channels: 8
407	Generico X188	1.343	Downstage	Channels: 8
408	Generico X188	1.351	Downstage	Channels: 8
409	Generico X188	1.359	Downstage	Channels: 8
410	Generico X188	1.367	Downstage	Channels: 8
411	Generico X188	1.375	Downstage	Channels: 8
412	Generico X188	1.383	Downstage	Channels: 8
413	Generico X188	1.391	House	Channels: 8
414	Generico X188	1.399	House	Channels: 8

Spot	Type	Patch	Position	Fixture Options
415	Generico X188	1.407	House	Channels: 8
416	Generico X188	1.415	House	Channels: 8
501	Intimidator Spot 255	1.423	House	Channels: 13
502	Intimidator Spot 255	1.436	House	Channels: 13
503	Intimidator Spot 255	1.449	House	Channels: 13
504	Intimidator Spot 255	1.462	House	Channels: 13
601	Intimidator Spot 100	2.1	House	Channels: 11
602	Intimidator Spot 100	2.12	House	Channels: 11
603	SlimBank Tri 18	2.23	House	Channels: 9
604	SlimBank Tri 18	2.32	House	Channels: 9
999	Mirror Ball 16 Inch	1.504	House	N/A
Generico Par DMX Layout				
1	(General Dimming) 0-255			
2	Red 0-255			
3	Green 0-255			
4	Blue 0-255			
5	White 0-255			
6	Dimming (When Ch 7 >31 function is invalid)			
7	Premade colors			
8	Color Speed			